

BK Model

Bracket Mount Luminaire LED 400W (Dimmable)



The BK400 LED bracket mount luminaire has a clean design for easy installation. It is ideal for parking structures with high lighting quality, energy efficiency and almost no maintenance. The advanced thermal management system provides wide surface area to allow speedy heat dissipation. The built-in air ventilation system will allow a constant fresh breeze to cool down the luminaire. Overall high quality design is to ensure long life span of the product.

Product Specifications

Electrical System:

All electrical components are UL certified.

Input Voltage: 90-305VAC , 277-528V 50/60 Hz

Power Consumption: 392W

Maximum Current: 4.35A

Power Factor (PF): >0.95

Mechanical Specifications

IP Rating : IP67

Tested Life Time : 62,000 hours-L70 @25C

Heat Sink : anodized aluminum

Lens Material : Polycarbonates (PC)

Operating Temperature: -40 F to 121 F (-40 to 50 C)

Fixture Dimension: 12.0" x 34.5" x 7-3/4"

Fixture Weight: 30.5 lb

Photometric Specifications

Lumen Output : 40,000 lumen at 5700K

CRI: 73 @ 5700K

CCT: 3500K, 4100K, 5000K, & 5700K

Beam Angles: 90x100, 30, 60, & 120

Optional

- Optical control function
- Three-in-one dimming function (1-10VDC/PWM/Resistance)

Warranty

Eight-year limited warranty.



FEATURES & BENEFITS:

- Clean and low profile design for easy installation.
- Direct replacement of 1000W HID fixture.
- Excellent luminaire efficacy provides significant energy saving.
- Three in one dimming functions: 0-10VDC, PWM, and resistance.
- Assembled in USA with domestic and imported components
- Rated Life : 50,000 hours
- Available in 3500K,4100K, 5000K,5700K color temperature.
- RoHS Compliant - Mercury free and Lead free

Applications :

- Parking Lot Lighting
- Street Lighting
- Airport Lighting
- Architectural Lighting

Ordering Information

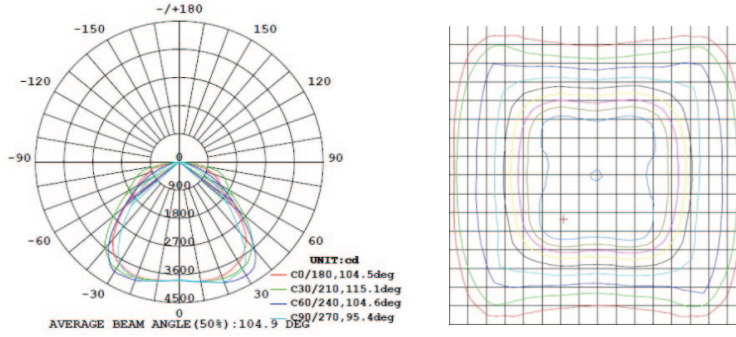
Example: **BK400X9057KSF**

Model Number	Output Wattage	Degree Beam Angle	Color Temperature	Fixture Color	Mounting Method
BK	400	X90	57K	S	K
	400- 400W	060 - 60 120 - 120 x90 - 90x100 x60 - 60x150 x70 - 70x150 x80 - 80x150	35K- 3500K 41K- 4100K 50K- 5000K 57K- 5700K	S- Silver B- Black	K- Knuckle Mount F- Bracket Mount

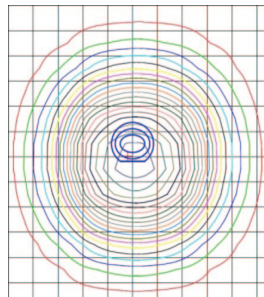
Note: Specifications subject to change without notice. Actual performance may differ as a result of end user environment and application.

Illumination Information

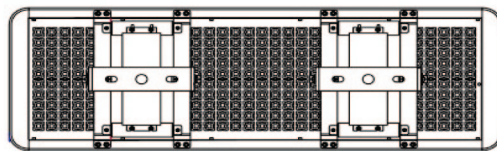
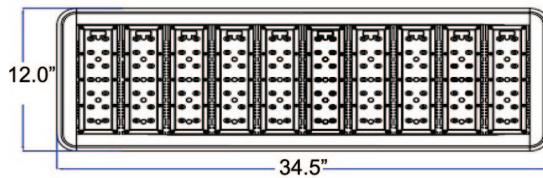
90 x100 Degree Beam Angle



60 Degree Beam Angle



Luminaire Dimension



Weight : 30.5 lb