

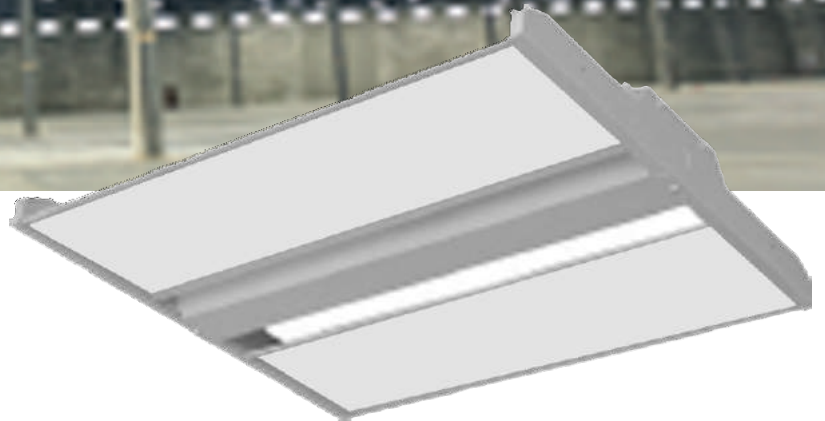


LED Indoor Lighting Product Guide





US designed & assembled, UL certified and DLC Prime 4.2 listed high performance **High Bay** troffer



LED Rite HIB Model- Dimmable

High performance and energy efficient High Bay LED troffer is ideal for retail, warehouse, industrial, commercial and manufacturing large area lighting applications.

FEATURES & BENEFITS:

- Modern and clean style, no exposed fasteners.
- Direct replacement of fluorescent troffer luminaire.
- Excellent luminaire efficacy provides significant energy saving.
- Dimmable via 0-10VDC standard
- Rated Life : 50,000 hours
- Assembled in USA with domestic and imported components
- RoHS Compliant - Mercury free and Lead free

Available Sizes:

- 2L x 2 ft. (15" x 25")
- 4L x 2 ft. (19" x 25")
- 6L x 2 ft. (19" x 25")
- 4L x 4 ft. (19" x 47")
- 6L x 4 ft. (19" x 47")

- See more on the product specification or visit our web:

www.ledrite.com

For details and other models,
Please contact: 847-683-8002, 120 Rowell Rd. Hampshire, IL 60140





TR Model

HIB Series

High Bay LED Troffer - Dimmable



2Lx 2 ft

4Lx 2 ft

6Lx 2 ft



4Lx 4 ft

6Lx 4 ft

Input Voltage(VAC)	120-277				
Power Consumption(W)	90	135 & 178	265	321	425
Color Temperature (K)	4000/5000				
Color Rendering Index (CRI)	80				
Lumen Output (lumen)	11,700	17,550 & 23,140	34,450	41,730	55,250
Operating Temperature (F)	-4 to 104				
(C)	(-20 to 40)				
Dimmer	0-10V DC				
Warranty (years)	5				

Construction /Finish

- 22 guage die formed cold-rolled steel bod
- All steel surfaces are powder coated.
- Can be suspended mount from the ceiling by AYC or EYE chain or direct mount on the ceiling.





US designed & assembled, UL certified and DLC Prime 4.2 listed high performance UFO High Bay



LED Rite UF Model- Dimmable, IP65

High performance and energy efficient High Bay LED light is ideal for retail, warehouse, industrial, commercial and manufacturing large area lighting applications.

FEATURES & BENEFITS:

- Modern and clean style, no exposed fasteners.
- Direct replacement of HID luminaire.
- Excellent luminaire efficacy provides significant energy saving.
- Dimmable via 0-10VDC standard
- IP65 rating for water and dust resistance
- Rated Life : 50,000 hours
- Assembled in USA with domestic and imported components
- RoHS Compliant - Mercury free and Lead free

Available Sizes:

- 100W (13" dia x 7.1" H)
- 150W (13" dia x 7.5" H)
- 200W (17" dia x 7.5" H)

- See more on the product specification or visit our web:

www.ledrite.com

For details and other models,
Please contact: 847-683-8002, 120 Rowell Rd. Hampshire, IL 60140





US designed & assembled, UL certified and DLC listed high performance **Center Basket** troffer



LED Rite DIS Model- Dimmable

Aesthetics and high performance uniform light across the entire luminaire that provides visual comfort.

FEATURES & BENEFITS:

- Modern and clean style, no exposed fasteners.
- Direct replacement of fluorescent troffer luminaire.
- Excellent luminaire efficacy provides significant energy saving.
- Dimmable via 0-10VDC standard
- Rated Life : 50,000 hours
- Assembled in USA with domestic and imported components
- RoHS Compliant - Mercury free and Lead free

Available Sizes:

- 1 x 4 ft. (12" x 48")
- 2 x 2 ft. (24" x 24")
- 2 x 4 ft. (24" x 48")

- See more on the reverse side or visit our web: www.ledrite.com

For details and other models,
Please contact: 847-683-8002, 120 Rowell Rd. Hampshire, IL 60140





TR Model

DIS Series

Center Basket Recessed Troffer - Dimmable



2 x 2 ft. (600 x 600 mm)



2 x 4 ft. (600 x 1200 mm)



1 x 4 ft. (300 x 1200 mm)

Input Voltage(VAC)	120-277		
Power Consumption(W)	24/36	42/68	24/36
Color Temperature (K)	3000/3500/4000/5000		
Color Rendering Index (CRI)	80		
Lumen Output (lumen)			
	2185 (24W; 3000K)	4260 (42W; 3000K)	2353 (24W; 3000K)
	3348 (24W; 5000K)	4505 (42W; 5000K)	2591 (24W; 5000K)
	4418 (36W; 3000K)	6894 (68W; 3000K)	3553 (36W; 3000K)
	4563 (36W; 5000K)	7073 (68W; 5000K)	3813 (36W; 5000K)
Operating Temperature (F)	-4 to 104		
(C)	(-20 to 40)		
Dimmer	0-10V DC		
Warranty (years)	5		

Construction /Finish

- 24 guage die formed cold-rolled steel bod
- All steel surfaces are powder coated.
- Smooth edge for easy handling.





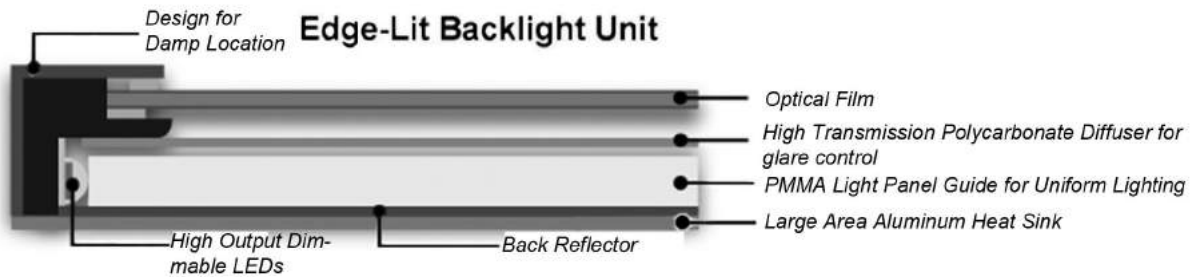
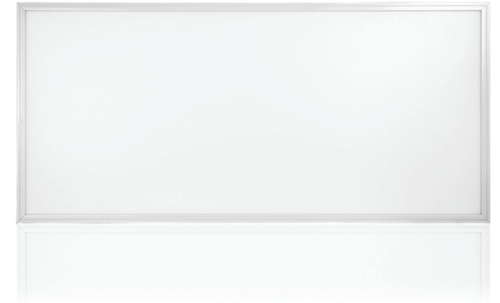
ULTRA THIN LED PANEL LIGHTS

Edge Lit Technology for Smooth Lighting Distribution

Ideal Solution for Grid Ceiling, Recessed Draywall, Surface, or Suspended installations

Replace Your Fluorescent Lighting With Our Ultra Thin Edge-lit LED Panel Lights

- Seamless powder-coated aluminum frame for sleek and light weight design
- Large surface aluminum heatsink back plate for rapid heat dissipation.
- Fully isolated, constant current LED driver for stable and uniform lighting from all view angles.
- PMMA light panel guide to efficiently direct the light downward while scattering it evenly.
- Polycarbonate diffuser eliminates glare.
- Quality performance and inexpensive for great value.



ULTRA THIN LED PANEL LIGHTS

TP Model - Product Specifications



	2x4	1X4	2X2
	40W & 60W	40W	25W
Lumen Output (lumen) +/-5%	5000 & 7500	5000	3125
Input Voltage	100~277VAC, 50/60 HZ		
Beam Angles	120		
Color Temperature (K)	3000/4000/5000		
Color Rendering Index (CRI)	> 80		
Operating Temperature (F) (C)	-4 to 113 (-20 to 45)		
Dimmer	0-10V DC		
Construction/Finish	Aluminum + PMMA +PC Diffuser		
Warranty (years)	5		

ULTRA THIN LED PANEL LIGHTS

TP Model - Accessories

Surface Mount Kit

Surface mounting fixture (ceiling/wall)
Available for: 1x4, 2x2, & 2x4



Hanging Mount Kit

Wirerope for suspension mounting (ceiling)
Available for: 1x4, 2x2, & 2x4





US designed & assembled, UL certified and DLC listed high performance **Vapor Tight** troffer



Vapor Tight Linear Fixtures



LED Rite **VT Model- 4-foot, Dimmable** Suitable for wet location

Most durable troffer for extreme environments where dust, moisture, and corrosion is inevitable.

FEATURES & BENEFITS:

- Modern and clean style, no exposed fasteners.
- IP65 rated design for wet location.
- Excellent luminaire efficacy provides significant energy saving.
- Dimmable via 0-10VDC standard
- Rated Life : 50,000 hours
- Assembled in USA with domestic and imported components
- RoHS Compliant - Mercury free and Lead free

Available Wattage:

42W & 69W

- See more on the reverse side or visit our web: www.ledrite.com

For details and other models,
Please contact: 847-683-8002, 120 Rowell Rd. Hampshire, IL 60140





High Bay Lighting Retrofit



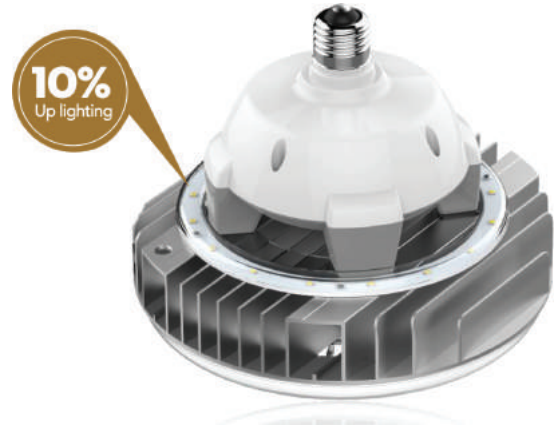
LED Rite LTCL Model

Suitable for enclosed fixture

Patented thermal management system allows fast heat dissipation to ensure a long life span of overall product performance.

FEATURES & BENEFITS:

- Modern and clean style
- Luminaire efficiency : 135lm/w
- 4kV surge protection
- Base: E26 and E39 for 60W and 80W model; E39 for 120W only
- Rated Life : 50,000 hours @L70
- 5-year warranty



Available Wattage:

60W, 80W and 120W

- See more on web:

www.ledrite.com

For details and other models,
Please contact: 847-683-8002, 120 Rowell Rd. Hampshire, IL 60140





Manufacturer for LED Luminaires

Smart SpaceControl

Intelligent Wireless Lighting Control System for Office lighting





Manufacturer for LED Luminaires

Smart SpaceControl

Intelligent Wireless Lighting Control System for Highbay Lighting

Highbay Control System

