

# TR Model

## DID Series



### Dual Basket Recessed Troffer LED 2x4 (Dimmable)

Aesthetics and high performance uniform light across the entire luminaire provides visual comfort.

#### Product Specifications

#### FEATURES & BENEFITS:

- Modern and clean style, no exposed fasteners.
- Direct replacement of 2'x4' fluorescent troffer luminaire.
- Excellent luminaire efficacy provides significant energy saving.
- Swing down diffuser lens for easy maintenance
- Dimmable via 0-10VDC standard
- Available in 3000K, 3500K, 4000K, 5000K color temperature.
- Rated Life : 50,000 hours
- Assembled in USA with domestic and imported components
- RoHS Compliant - Mercury free and Lead free

#### Applications :

- Shop lighting
- Commercial lighting
- Boutique lighting
- Illumination lighting
- Architectural lighting

**Lumen Output :**  
 42W -3000K : 4239 lumen  
 42W -5000K : 4568 lumen  
 68W -3000K : 6738 lumen  
 68W -5000K : 7261 lumen

**Operating Temperature:** -4 F to 104 F (-20 to 40 C)

**Color Temperature (TYP):** 3000K, 3500K, 4000K & 5000K

**Color Rendering Index (CRI):** 80

#### Ordering Information

Example: **TR244042DIDG**

#### Electrical System:

All electrical components are UL certified.

**Input Voltage:** 120/277VAC

**Power Consumption:** 42W and 68W

#### Construction /Finish

- 24 guage die formed cold-rolled steel bod
- All steel surfaces are powder coated.
- Smooth edge for easy handling.
- Swing down diffuser lens for easy maintenance.

#### Warranty

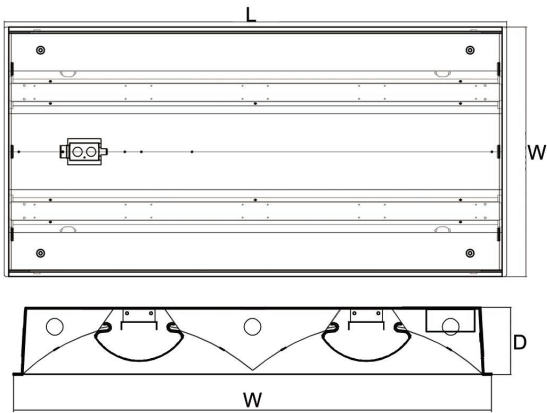
Five-year limited warranty.



Model Number	Luminaire Type	Color Temperature	Output Wattage	Luminaire Series	Installation
<b>TR</b>	<b>22</b>	<b>40</b>	<b>42</b>	<b>DID</b>	<b>G (Optional)</b>
	<b>24- 2'x4'</b>	<b>30- 3000K</b> <b>35- 3500K</b> <b>40- 4000K</b> <b>50- 5000K</b>	<b>42- 42W</b> <b>68- 68W</b>	<b>DID- dual basket recessed troffer</b>	<b>G- Standard Lay-in Grid</b> <b>T- Concealed T</b> <b>S- Slot Grid</b> <b>F- Flange Trim with supporting swing Gates</b>

**Note:** Specifications subject to change without notice. Actual performance may differ as a result of end user environment and application.

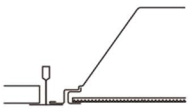
**Dimensions:**



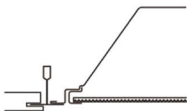
**Length - 47-2/3"**  
**Width - 23-3/4"**  
**Depth - 3-1/2"**

**Installation Method**

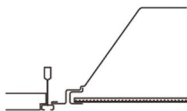
**G**  
 Grid/Lay-in  
 Standard



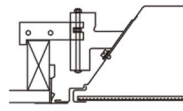
**G**  
 Concealed T



**G**  
 Slot Grid



**F**  
 Flange Trim  
 With Supporting  
 Swing Gates



**Ceiling  
 Type**

Exposed Grid  
 Concealed T  
 Slot Grid  
 Flange

**Trim  
 Type**

G  
 G  
 G  
 G\*\*\*

When order Flange Kit for installation in drywall ceiling, please consult us for compatibility.